

# Operating Manual

**Software Option:** MF80 Upgrade Tool Operation Instruction

**Software Version:** C

**ZTE CORPORATION**

## Contents

1	Applicative context.....	3
1.	Hardware environment.....	3
2.	Software environment.....	3
2	Operational.....	3
3	Note.....	4

# 1 Applicative context

## 1. Hardware environment

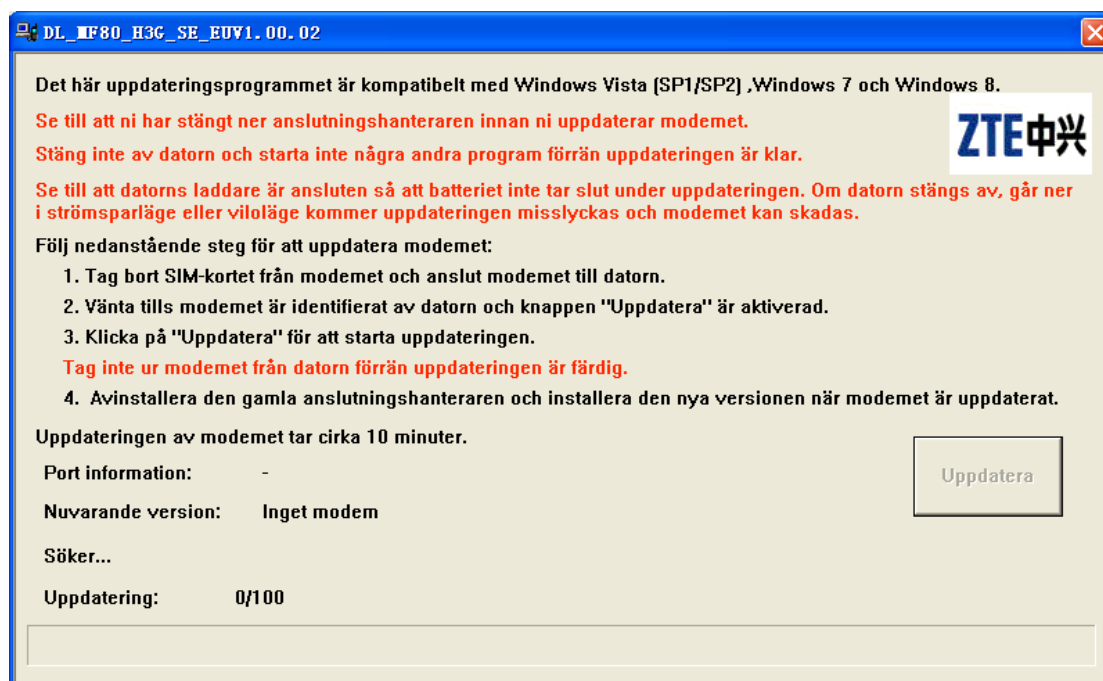
- 1) computer configuration: AMD Athlon64x2 Dual Core Processor 4000+ 2.11GHZ  
dominant frequency 1.99GB memory
- 2) mobile type: MF80
- 3) data line type: Micro USB
- 4) USB transmission speed:2.0+1.1

## 2. Software environment

- 1) operating system: Windows® Vista, Windows 7 and Windows 8.

# 2 Operatonal

1. Connect the MF80 data card with the computer correctly.
2. Run this upgrade tool. The device will be detect automatically.



3. Press the button  to start the download.

## 3 Note

1. **Never close the tool when download procedure is running, such operations maybe seriously damage the card permanently!**